



Easter Seals Wisconsin
 101 Nob Hill Rd., Suite 301
 Madison, WI 53713
 www.EasterSealsWisconsin.com
Creating solutions, changing lives.

Nonprofit Org.
 U.S. Postage
 PAID
 Permit No. 136
 Madison, WI

RETURN SERVICE REQUESTED



Network News

The newsletter of Easter Seals Wisconsin • Summer/Fall 2008

FARM Program launches Equipment Reutilization Project



A screenshot of the new and recently launched FARM Program website .

New website will encourage the exchange of farm equipment that incorporates assistive technology

Since its inception, Easter Seals Wisconsin's FARM Program has provided vocational rehabilitation for over 1,600 farmers and farm workers with disabilities. Through the program, with the help of the state Division of Vocational Rehabilitation (DVR), Easter Seals estimates that Wisconsin farmers have acquired well over 4,000 assistive technology devices.

With all of that adaptive equipment being used, Easter Seals decided to look at ways to reutilize assistive technology equipment that has been acquired for farmers with disabilities and is no longer being used. Easter Seals was awarded a grant from the National Assistive Technology Device Reutilization Coordination and Technical Assistance Center to develop a web-based resource for Wisconsin's farmers with disabilities to help them to continue to farm, while reducing waste of serviceable equipment that is no longer needed.

Easter Seals has been working with the University of Wisconsin Extension for the past year to develop an Ag Equipment Exchange website. The AgrAbility Advisory Council was consulted regarding site design components, the needs of the agricultural community, and the kind of design and language that would most appeal to farmers. The consensus was that a Craigslist-style website that

focused more on farming needs than disability needs would be ideal as this style of site provides user-to-user interaction and a direct sharing of ideas.

The site launched in August of 2008. Links to resources have been added to provide information about specific types of equipment and to direct potential users to a link that will help them to compare and contrast similar equipment. Contact information for FARM staff is also available to help farmers understand whether and how a particular piece of equipment might help accommodate a specific disability.

"Farming is a \$51 billion industry in Wisconsin, accounting for one in every five jobs and we look forward to bringing this new opportunity to the farmers we serve," says Paul Leverenz, Vice President of FARM and Vocational Services for Easter Seals Wisconsin. "The website is yet another approach in creating ways for farmers to solve problems they may face because of a disability and continue in the profession they love."

The FARM Program section of Easter Seals Wisconsin's website has also been redesigned to ease navigation and update content. You can reach the site by visiting www.EasterSealsWisconsin.com and clicking on the FARM link.

Lightning Strikes Camp Wawbeek

Fire is contained to one building

Easter Seals Camp Wawbeek had a fire on Thursday, June 12 which was caused by a lightning strike. There were no injuries. The fire was contained in one building which held the Nurses' station as well as a recreational program room and storage area.

The fire started in the attic where firefighters cut three holes in the roof and pulled down parts of the ceiling to help contain the blaze. All of the areas suffered significant smoke and water damage.

"I am so thankful that this happened during our training week and not when the camp was filled with campers," said Kelly Housman, Director of Camp and Respite Services. "We lost most of our nursing supplies as well as quite a bit of our outdoor equipment like sleeping bags, tents and blankets, but much more important is that no one was hurt and that the firefighters were able to contain the fire and keep it from spreading to other buildings. And it was wonderful to see a number of Easter Seals supporters step forward with donations to help us replace lost equipment."

Easter Seals Camp Wawbeek is celebrating its 70th year of providing barrier-free recreation to people with physical disabilities.



A fire caused by a lightning strike, during one of the many severe storms that hit the Wisconsin Dells area in June, caused significant damage to one of the buildings at Camp Wawbeek.

Network News is published by Easter Seals Wisconsin • 101 Nob Hill Rd., Suite 301 • Madison, Wisconsin • 53713 • Printing of the Network News is donated in part by Coakley-Tech • Madison, Wisconsin



Jean Driscoll

Jean Driscoll keynotes Recognition Dinner

Along with being a world-class athlete, Olympian, author, motivational speaker and advocate worldwide for people with disabilities, Jean Driscoll is also a Camp Wawbeek alumna.

As the keynote speaker at Easter Seals Wisconsin's Annual Recognition Dinner, Jean spoke of her years at Camp Wawbeek and about how the confidence she gained there impacted her life, helping her to see that she could set her goals high — and reach them.

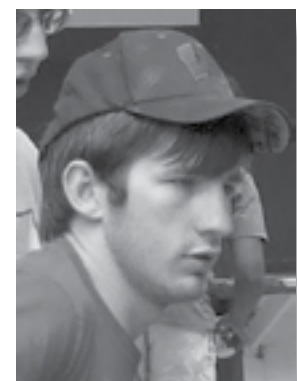
The Annual Recognition Dinner was held May 20, 2008 at Nakoma Golf Club in Madison and honored a number of people and organizations statewide for their contributions to Easter Seals and to people with disabilities. *See center spread for profiles of honorees.*

Elks Day at Respite Camp

On June 28, 2008 the Wisconsin Elks Association held their annual Elks Day at the Wisconsin Elks/Easter Seals Respite Camp in Wisconsin Dells. Over 70 Elks attended.

The Elks, who have contributed over one million dollars to the Respite Camp over the past ten years, used the occasion to pledge to continue their support, which includes sponsoring campers from each district as well as maintaining the buildings and grounds at Respite Camp.

The Elks/Easter Seals partnership is unique within the Elks National Organization, and will be featured at the Elks National Convention this year.



Joseph Boyles

Joseph Boyles completes service

2007-2008 AmeriCorps Volunteer Coordinator

In August of 2008, Joseph Boyles completed his year-long term of AmeriCorps service. During that year, Joseph recruited and worked with over 200 volunteers for the Easter Seals Camp Wawbeek and Respite programs. "Joseph was a great addition to the camp team," says Kelly Housman, Director of Camp & Respite services. "We'll miss him and wish him a very successful future!"

Camp Wawbeek loses long-time camper

Easter Seals mourns the passing of Harvey Krueger, one of Camp Wawbeek's most ardent advocates. Harvey died peacefully at his home on April 22, 2008.

Born in Waukesha in 1926, Harvey, who had cerebral palsy, attended Camp Wawbeek for 68 consecutive years and enjoyed his time at camp immensely. He was an active volunteer at Bethesda Lutheran Home in Watertown, where he put in more than 10,000 volunteer hours and was also active as a foster grandparent.

On July 29, a tree was planted at Camp Wawbeek in Harvey's memory. His enthusiasm and kind heart will be missed.

ADMINISTRATION

Christine Fessler, President/CEO
cfessler@wi.easterseals.com · 608.277.8288 x 116
Nance Roepke, Executive Vice President
nroepke@wi.easterseals.com · 608.277.8288 x 117
Nanc Howard, Executive Assistant
nhoward@wi.easterseals.com · 608.277.8288 x 115

MARKETING & COMMUNICATIONS

Brian Schuetz, Director
bschuetz@wi.easterseals.com · 608.277.8288 x 107

FINANCE

Pam Gard, Acting Chief Financial Officer
pgard@wi.easterseals.com · 608.277.8288 x 119
Kris Nelson, Staff Accountant
knelson@wi.easterseals.com · 608.277.8288 x 118

PROGRAM DEVELOPMENT

Ken Saville, Vice President
ksaville@wi.easterseals.com · 608.277.8288 x 108
Lannia Syren, Manager, Grants and Government Relations
lsyren@wi.easterseals.com · 608.277.8288 x 120

CLIENT ASSISTANCE

Jill Gretzinger, Coordinator, Outagamie Co. Disability HelpLine
jgretzinger@wi.easterseals.com · 920.832.0344

CAMP & RESPITE PROGRAMS

Kelly Housman, Director
khousman@wi.easterseals.com · 608.277.8288 x 111
Valerie Croissant, CTRS, Respite Coordinator
respitel@wi.easterseals.com · 608.254.2502
Melissa Drake, CTRS, Camp Wawbeek Coordinator
mdrake@wi.easterseals.com · 608.254.2502
Keri Jo Bronsdon, Assistant Respite Coordinator
kbronsdon@wi.easterseals.com · 608.254.2502
Nichole Singleton, Respite Nurse Coordinator
nsingleton@wi.easterseals.com · 608.254.2502

Aurora Holder, Program Assistant
aholder@wi.easterseals.com · 608.277.8288 x 124
Emily Colwin, AmeriCorps Coordinator
ecolwin@wi.easterseals.com · 608.277.8288 x 124

FARM & VOCATIONAL SERVICES

Paul Levereniz, Vice President
plevereniz@wi.easterseals.com · 920.898.9224
Holly Allen, Rural Rehabilitation Specialist
hallen@wi.easterseals.com · 920.884.0005
Jeff Kratochwill, Rural Rehabilitation Specialist
jkratochwill@wi.easterseals.com · 608.279.9436
Bruce Whitmore, Rural Rehabilitation Specialist
bwhitmore@wi.easterseals.com · 920.675.0570
T. Ellenbecker, Rural Rehabilitation Specialist
tellenbecker@wi.easterseals.com · 715.842.3411
Paul Untiet, Rural Rehabilitation Specialist
puntiet@wi.easterseals.com · 715.347.4093
Jenni Brumm, Self-Employment Services Specialist
jbrumm@wi.easterseals.com · 920.431.0843
Julie Jensen, Self-Employment Services Specialist
jjensen@wi.easterseals.com · 920.431.0843
Melba Brown, Technical Assistant
mbrown@wi.easterseals.com · 608.277.8288 x 106
Judith Guttman, Technical Assistant
jguttman@wi.easterseals.com · 608.277.8288 x 125

DEVELOPMENT

Terri Spring, Regional Director/Southern Wisconsin
tspring@wi.easterseals.com · 608.277.8288 x 109
Brenda Thompson, Regional Director/Northwestern Wisconsin
brendat@evol.net · 715.834.9452
Mary Statz, Assistant for Marketing & Development
mstatz@wi.easterseals.com · 608.277.8288 x 103

DONATION CENTER/PICKUP SERVICES

Walter Loos, Director
wloos@wi.easterseals.com · 608.257.7780
Harper Mruk, Fox Valley Manager
hmruk@wi.easterseals.com · 920.882.1155
Scott Scheffe, Donor Relations Manager
sscheffe@wi.easterseals.com · 608.310.3000

New faces at Respite Camp

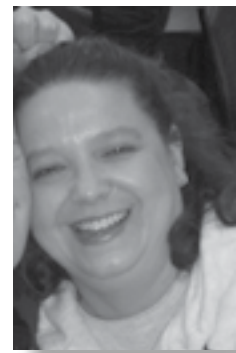


Keri Jo Bronsdon

Keri Jo Bronsdon

Assistant Respite Coordinator

Keri Jo oversees the Fox Valley Day Respite Program and assists the Respite Coordinator. She graduated from UW Stout with a degree in Vocational Rehabilitation and has been a part of the Easter Seals team since 2004 in a variety of seasonal positions.



Nichole Singleton

Nichole Singleton

Respite Camp Nurse Coordinator

Nichole has been in the medical field for the last 18 years, most recently as a pediatric nurse at Children's Hospital of Wisconsin in Kenosha. She loved her first summer at Respite Camp and is looking forward to continuing with Easter Seals.



Shawn Rosema

Shawn Rosema

AmeriCorps Volunteer Coordinator

Shawn joins us this fall from Grand Rapids, Michigan. He has a Political Science degree and now, because of his time at Camp Wawbeek and Respite Camp, is pursuing a Special Ed degree. He's looking forward to his second AmeriCorps term and to being a part of the year 'round camp team.

Spotlight Siblings

Second Siblings Weekend Scheduled

Due to the popularity of the Spotlight on Siblings weekend offered at Easter Seals Respite Camp each spring, a second siblings weekend has been scheduled for October 31 - November 2, 2008. The traditional spring weekend will be held April 17-19, 2009.

Spotlight on Siblings is a weekend devoted entirely to young people who face the special joys and challenges of having a sibling or parent with a disability. While traditional camping fun is the primary objective of the session, campers will also get the chance to meet peers living in similar situations, discuss their feelings with others and get advice on dealing with the unique stresses they may encounter. This fun, fast-paced weekend offers a variety of activities, including our new High Ropes Course, discussion sessions and team-building challenges.

To register or for more information call 1.800.422.2324 ext. 124 or visit www.EasterSealsWisconsin.com.

Fox Valley Day Respite

We are kicking off our second year of the Fox Valley Day Respite program in Appleton. Running on Saturdays (see dates below) from 9:00AM - 4:00PM with one snack and lunch provided. AmeriCorps members help Respite staff plan on-site activities as well as trips to area attractions such as parks, the Children's Museum and the library. Fox Valley Day Respite, directed by Assistant Respite Coordinator Keri Jo Bronsdon, is open to individuals with moderate to severe disabilities who need 1:1 or 2:1 care. To register or for more information call 1.800.422.2324 ext. 124 or visit www.EasterSealsWisconsin.com.

2008 - 2009 Respite Weekends

September 19-21
October 3-5
(Fall Sprawl Weekend)
October 31-November 2
(Respite and Siblings)
November 21-23
(Respite and Asperger's all ages)
December 12-14
December 27-30
January 16-18
(Respite and Asperger's all ages)

February 6-8
February 27-March 1
March 20-22
April 3-5
April 17-19
(Respite and Siblings)
May 1-3
May 15-17

Siblings are welcome at all sessions as space permits.

2008 - 2009

Fox Valley Respite Saturdays

November 8
December 6
January 31
March 7
April 25
May 9

Register Now!
1.800.422.2324



Camp Wawbeek seeks to support our Vets and their families

Easter Seals is in the process of developing a new program to serve veterans with disabilities and their families.

The goal of the program is to offer families the opportunity to come to Camp Wawbeek and, while enjoying the fully-accessible recreational activities offered there, meet other families living in similar circumstances. Of equal importance, the program will also offer therapeutic group discussions for families as well as separate group discussions for children, spouses and vets. These group discussions will be led by trained professionals and offer participants opportunities to talk about changes that may be going on within the family.

Easter Seals Wisconsin would like to give back to our vets and is currently seeking funding that would enable us to offer this weekend program at minimum or no cost to the vets and their families. Please contact Kelly Housman at 1.800.422.2324 ext. 111 to learn more about the program or to discuss its funding.

Camp Wawbeek 70th Anniversary

About 100 people attended an Open House at Camp Wawbeek on July 29 to celebrate the camp's 70th Anniversary.

The group — comprised, for the most part of former campers and staff — enjoyed light refreshments and the showing of vintage films of the camp, which is the oldest continuously operating Easter Seals camp in the country. A number of tours were conducted and visitors were able to see first hand how Camp Wawbeek has changed since they'd last been there as well as how it has remained the same.

The casual gathering gave attendees plenty of opportunities to share photos of summers past, to reminisce with old friends and to meet others who have fond memories of the role Camp Wawbeek has played in their lives.



2008-2009

Wawbeek Weekends

- October 3-5 • Teen
- January 23-25 • Augmentative Communication
- January 30-February 1 • Teen
- February 20-22 • WIKIDAS (asthma)
- March 13-15 • Adult
- March 27-30 • Trailblazers
- April 24-26 • Vets

To learn more about specific weekends and for help in deciding which best suits you or your loved one, call 1.800.422.2324 or visit www.EasterSealsWisconsin.com.

Register Now!

1.800.422.2324



Ken Saville's face was everywhere as Camp Wawbeek congratulated the Vice President of Program Development for Easter Seals Wisconsin on his 30 years with the organization. Ken began his service with Easter Seals as a counselor at Camp Wawbeek.

Easter Seals Wisconsin's Donation Center raises funds vital to the continuation of our programs and services. Your participation in this service is deeply appreciated!

Scheduling a pickup is as easy as 1 • 2 • 3...

1. Schedule your pickup by calling us toll free at 1.877.208.5109 or booking the pickup online at www.EasterSealsWisconsin.com.
2. Bag or box your donation prior to the scheduled pickup date. Please be sure to protect your donation from any inclement weather. Items that are damaged or cannot be sold "as is" may be left behind.
3. The day of pickup, have your donation clearly marked with "ES" and curbside by 7:00 a.m. Your donation will be picked up between 7:00 AM and sundown.

Joint Fundraising Opportunities

The Easter Seals Wisconsin Donation Center has an exciting new way for community organizations to become involved with our ongoing collection efforts.

We are looking for public and private schools, faith and community-based groups, civic organizations and other nonprofit organizations to become our partners in collecting gently used goods. In return, partner organizations will receive shared proceeds that can be used towards their own fundraising initiatives.

This is an excellent way to help us reach our collection goals throughout the year while raising funds for your own worthy causes. To learn more, contact Walter Loos at 1.877.208.5109.

Vehicle Donation Program

The Donation Center's vehicle donation program continues to be a growing source of funding for the agency. By working directly with auction houses throughout the state, we are able to maximize the value received for the donation and therefore realize the full benefit of the gift.

We accept cars, trucks, boats, trailers, RVs and snowmobiles and will assist donors in arranging pickups and title transfers. Tax deductible receipts will be provided to donors for the full amount the vehicle raises in auction.

To learn more or to donate a vehicle, please call 1.877.208.5109.



Drop off Locations

To make donating easier we have added a number of conveniently located drop off locations in each of our major markets. At many of these sites, donors will find either a donation bin or barrel in which they can place their donated goods. To help us maintain this convenience, we ask donors to note the following guidelines:

- Only clothing and small household items are accepted at the drop off locations. For larger donations, contact us at 1.877.208.5109.
- All items must be clean and in reusable condition.
- No food, furniture or appliances.
- All items must be able to fit completely into either the donation bin or barrel to prevent any weather-related damage.
- Please don't leave anything outside of the donation bins or barrels.

Drop off sites are available in these cities: Appleton, Delavan, Eau Claire, Madison, Menasha, Milwaukee, Monona, Neenah & Oshkosh

For a complete list of drop-off and bin locations, visit: www.EasterSealsWisconsin.com

Event Highlights



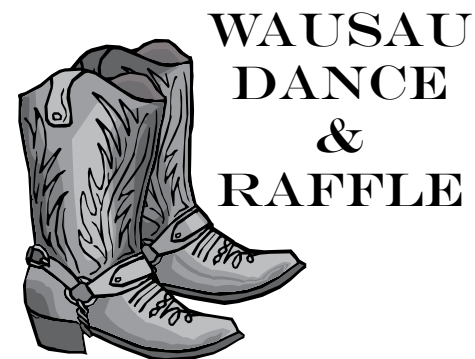
Members of the committee of Alliant Energy employees that plans the Alliant Energy Bowling Classic present a check to Camp Wawbeek Ambassador Dan Remick. Back row (left to right) – Tiffany Meyer, Gail Mountford, Lisa Statz and Bill Brenner. Front row – Kathryn Reif, Event Coordinator Rod Ripley, Dan Remick, Amanda Dean and Debbie Woods.

Alliant Energy employees bowl for Easter Seals

An enthusiastic crowd of employees from Alliant Energy gathered at Badger Bowl in Madison on March 13, 2008 to take part in the 5th Annual Alliant Energy Bowling Classic for Easter Seals.

Bowlers of all abilities raised money from family, friends and colleagues prior to the afternoon of fun and camaraderie. Along with additional funds from several sponsors, the proceeds from an auction and a generous matching gift from the Alliant Energy Foundation, they were able to present a check for more than \$22,500 to Easter Seals. In its first five years, the event, which is the brainchild of Alliant Energy's Rod Ripley (who also serves as a member of Easter Seals Wisconsin's Board of Directors), has raised more than \$75,000 for Easter Seals.

Thank you, Rod and everyone at Alliant Energy!



The Wausau Dance and Raffle

The Wausau Dance and Raffle was held March 29 at Schmidt's Ballroom in Wausau. The event raised over \$10,000 with proceeds from raffle tickets, raffles the day of the event and the generosity of these sponsors: Air Quality Control, LLC., Cloverbelt Credit Union, Color Vision Printing, Greenheck Fan Corp., Integrity Fire Protection, IROW, John Orhmundt Construction, Inc., K & K Material Handling, Marth Wood Shavings Supply, Inc., REI, Schmidt's Ballroom Bar & Grill, Scott's Enterprises, S.D. Ellenbecker Inc., Springdale Farm, United Structures, Inc. and Waraksa Excavating, Inc. The band SouthBound played from 7pm to 11pm. The event was hosted by Country Favorites WYTE. A big thank you to Jim and Paulene Sala for the tremendous amount of hours they put into this event to make it a success.

2008 Human Race

The eighth annual Human Race held in Appleton in May raised almost \$3500 for the Easter Seals Disability HelpLine of Outagamie County. Ann Schwaller and Keith Posselt were the top fundraisers for the HelpLine. A special thanks to them as well as everyone who participated this year.

Bump it Up for Easter Seals

Bump it Up for Easter Seals was held July 19 & 20 at the 8th Street Saloon in Medford. The volleyball tournament, organized by Dan Olson and the staff of Century 21 Dairyland Realty North, raised over \$1,500.

2008 Blizzard Blast

An abundance of snow boosted attendance at the 2008 Blizzard Blast, held February 2 at the Dorf Haus Supper Club in Roxbury. Over 200 snowmobile enthusiasts turned out for the event which was hosted by the Dane County Council of Snowmobile Clubs. The council has hosted the event annually for more than 20 years, with proceeds benefiting Easter Seals. This year they raised more than \$13,000.

Easter Seals extends its gratitude to the snowmobile clubs and to the following for the part they played in this successful event: The Dorf Haus Supper Club, UW Provisions, Dawn's Foods and Gardner Bakery.

FARM Program

FARM Ambassador Michael Hansen

Michael Hansen, who owns and operates a farm in central Wisconsin where he raises organic meats, has Degenerative Disc Disease and Spinal Stenosis. The conditions, which worsened significantly in 2006, cause severe back pain and have made many of the everyday tasks his operation requires difficult, painful or impossible to do. Doctors gave him a 25 pound lifting restriction and he cannot stand or sit in one place for any appreciable length of time or sustain jarring (as would be experienced on a tractor).

"It took me a long time to admit and accept that I have a disability," Michael says. "Everyday chores were becoming a real problem and I was learning that I couldn't take anything for granted."

Michael was determined to stay in farming if at all possible, and after hearing about the Easter Seals FARM Program through the Marshfield Farm Medicine Center, he contacted the agency to see if they could offer any advice that might make his daily chores manageable. Jeff Kratochwill, a FARM Program Rural Rehabilitation Specialist, contacted Michael and together they walked through a day on the farm, analyzing each task.

Michael prepares and ships organic meat to customers all over the country. When full, the boxes can weigh 70 pounds, greatly exceeding Michael's 25 pound lifting restriction. Jeff recommended using smaller boxes, bringing the weight of each into the acceptable range and installing a hydraulic lift cart along with a conveyor system that would reduce the strain on Michael's back even further.

The tractor Michael was using presented a number of difficulties. Not only was the amount of jarring Michael experienced when operating it significant, the small operator's station and the clutching and shifting



Michael Hansen

mechanisms added to the stress on his back. To address these concerns, Jeff suggested a different tractor. The recommended model had a swiveling seat with impact-absorbing suspension, making it possible for Michael to monitor equipment being pulled without twisting his body in a way that aggravated his back. The more easily reached shifting and clutching mechanisms further reduced the strain on Michael's back. Jeff also suggested an automatic hitching device so that Michael could hitch and unhitch his equipment without having to climb on and off the tractor and perform the bending and lifting involved in the task.

Jeff also offered advice on doing some chores in a slightly different manner and for making some smaller modifications to equipment. After the recommendations were approved by the Division of Vocational Rehabilitation, modifications were made and equipment purchased.

"I'm still learning to use, make or adapt tools and technology so that I can get the work done," says Michael. "Without the help and advice I got from the FARM Program, I wouldn't be functioning at the level I am today. I'm very grateful to Easter Seals and the folks at DVR for helping me to stay on the farm and keeping my dream alive."

Disability HelpLine

Warm Water Swimming offers therapeutic fun

With a financial gift from employees of Thrivent Financial for Lutherans, the Easter Seals Disability HelpLine of Outagamie County was able to offer two warm water swim outings for Fox Valley area children with disabilities and their families in the past several months.

The benefits of warm water are many: improved circulation and balance and increased endurance, flexibility, muscle strength and range of motion. Beyond the therapeutic benefits, the outings provide old fashioned fun and a great recreational opportunity for the entire family.

"This was so relaxing for our family," said one parent. "My son's behavior problems didn't cause a stir because everyone present understood his issues." Another parent noted that because her daughter typically can't tolerate the standard temperature of public pools, the warm water outing gave her a rare opportunity to swim, something she really enjoys.

Approximately 60 people attended the two swim outings, which were held at Swimtastic in Menasha. The HelpLine hopes to continue to offer additional sessions in the future.

Avenues to Understanding

Disability Awareness program available free of charge to educators and youth leaders

Easter Seals Wisconsin invites public and private schools, early childhood programs (preschool, family and group daycare, child care, Head Start, pre-kindergarten, etc.), faith and community-based youth organizations and community groups across our state to join us in presenting *Avenues to Understanding*, a disability awareness program, to young people across our state.

The Avenues to Understanding Educational Guide, free to those who wish to teach or share the program, is designed to provide an expanding knowledge of disabilities and disability issues for young people as they age.

Young children will be presented with an introduction to disabilities, will learn about what they are, and will be helped to look for similarities rather than differences when meeting someone with a disability.

Older kids will begin to explore the architectural and attitudinal barriers that may provide stumbling blocks to integration for people with disabilities and look at them in conjunction with their own need to 'fit in'.

High school students are encouraged to explore their communities, to look at how people with disabilities are regarded and portrayed and to consider how people with disabilities might be affected by the same 'real world' challenges they themselves are facing – independent living, college and jobs.

It is Easter Seals' hope that *Avenues to Understanding* will help to shape or change attitudes and foster positive behaviors in ways that will make a direct impact in the lives of people with disabilities in Wisconsin.

To learn more or to sign up, contact Mary at 1.800.422.2324 ext, 103



10K Run/5K Run/5K Walk&Wheel
8:00 AM Registration • 9:15 AM Run
Saturday, October 4, 2008
Camp Wawbeek • Wisconsin Dells

Serious runners as well as families looking for a leisurely stroll through the woodlands north of Wisconsin Dells are encouraged to join Easter Seals Wisconsin at the 10th Annual Fall Sprawl on October 4, 2008.

The event benefits Easter Seals Camp Wawbeek and takes place on the camp's 400 acres. Participants will have the opportunity to meet campers and other Easter Seals clients and to learn first hand how the services provided by Easter Seals make a real difference in their lives.

The cross-country course over pavement, gravel and grass covers two distances: 5K & 10K. Participants in wheelchairs may run the course over partially-accessible trails. The \$15 registration fee (\$20 after September 26, children under 10 free) includes a Fall Sprawl t-shirt, water bottle, fresh



Camp Wawbeek camper Barbara Brown and counselor Katie Prill are all smiles as they cross the finish line at the 2007 Fall Sprawl.

fruit, beverages and a complimentary lunch. Teams are welcome, and are encouraged to set a financial goal of \$1550 in pledges and donations — the amount needed to cover the cost of two weeks at Camp Wawbeek for one camper.

Awards for top finishers in a number of age groups are given out as well as prizes for top fundraisers.

Visit www.EasterSealsWisconsin.com to learn more and to register. Inquiries can also be directed to Ken Saville at 1.800.422.2324 ext. 108.

Annual Campaign

Volunteers raise more than \$265,000

Each spring businesspeople from around the state volunteer to talk to colleagues and friends about Easter Seals and secure their financial support. This year, in spite of the troubled economy, our incredibly committed 'VIPs' raised a record-breaking \$265,000. We deeply appreciate their dedication and generous gift of time.

Top Donors to the 2008 Annual Campaign

Advertisers Press, Inc.
 Mark Kliwer & Eileen Ahearn
 Alliant Energy Employees
 Alliant Energy Foundation
 AMCORE Bank
 American Family Insurance
 AnchorBank
 Appleton Papers
 Associated Bank
 Bemis Flexible Packaging
 The Benefit Services Group
 Calkins Engineering
 Covance Laboratories, Inc.
 Credit Union Executives Society
 Data Financial Business Service

Gayle Haller & Richard Davies
 Thomas & Deborah Degnan
 Pete & Michelle Farrow
 First Weber Group Foundation
 Jerry & Mary Foellmi
 Furniture Express, Inc.
 General Engineering Co., Inc.
 Godfrey & Kahn
 Gordon Flesch Co., Inc
 Bill & Lynn Holley
 In Business Magazine
 James R. Joseph
 Paul & Anne Karch
 KleenMark
 Bob & Sharon Landsee



Easter Seals extends special thanks to our Annual Campaign Sponsors, Godfrey & Kahn and the First Weber Group Foundation.

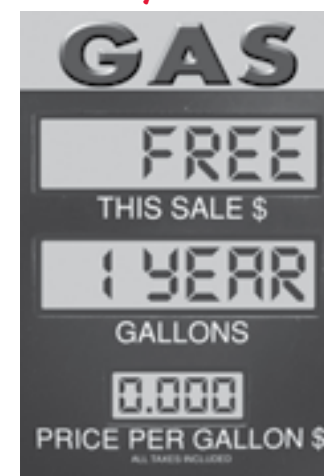


First Weber Group
 FOUNDATION, INC.

Madison Lighting
 Maine Lions Club
 Tim McKenzie
 Mercury Mail Services
 Mermaid Car Wash
 Mortenson, Matzelle & Meldrum
 Murphy Desmond
 Tom & Sandy Muschitz
 Nakoma Golf Club
 National Guardian Life Insurance
 Oak Bank
 Elly Pick
 Craig & Mary Raddatz
 Ryder Transportation
 Michael Schlageter

Eric & Sara Schwartz
 Noel & Diane Smith
 Start Renting
 Scott & April Stevenson
 United Way of Grant County
 West Bend Insurance
 Mark & Angela Wieser
 Wisconsin Club Managers Fdn.
 Wisconsin State Journal

Century 21 Affiliated Gas Raffle



*Win
 free gas
 for a year
 and help
 Easter
 Seals!*

Tickets available now! • Drawing October 28, 2008
Century 21 Affiliated Royal Avenue office • Madison
 Pain at the pump? Century 21 Affiliated gives you the chance to win a \$3,000 gas card! All proceeds benefit Easter Seals Wisconsin. Tickets are only \$10 each or 3 for \$25. *Get your tickets by contacting Century 21 Affiliated at 1.800.238.4646 or Easter Seals at 1.800.422.2324 ext. 109.*

5th Annual Fall Fun Fest

2:00 PM • Saturday, November 15, 2008
Eagle's Club • Hallie (near Eau Claire)

The annual Fall Fun Fest will be held November 15 at the Eagle's Club in Hallie from 2:00 PM until 6:00 PM. One hundred and fifty \$50 raffle tickets are sold prior to the event and will get the purchaser and his or her family into the afternoon of fun and fellowship. Along with the chance to win one of 20 cash prizes (top prize \$1,000), those attending will enjoy lunch, beverages, games and more raffles. All proceeds benefit Easter Seals Wisconsin. *Call 1.715.834.9452 for tickets or more information.*

15th Annual Pancake Breakfast

8:00 AM - 12:30 PM • Sunday, October 5, 2008
Camp Wawbeek • Wisconsin Dells

Only \$5 for all the pancakes and sausages you can eat! After breakfast, guests are invited to enjoy performances by the Canepa School of Dance and to take a relaxing trail ride and a tour of Camp Wawbeek. Placemat advertisements and table sponsorships available for purchase. *Call 1.800.422.2324 ext. 108 for more information.*

Golf Outing for Kids

Easter Seals premier event enjoys another banner year

Despite a year of devastating storms and flooding, the Wisconsin Dells business community stepped forward once again, making up the backbone of the many businesses supporting Easter Seals Wisconsin by sponsoring or participating in the 13th Annual Golf Outing for Kids.

Hosted by Pat Richter and Barry Richter, this year's event was held July 1st at two world class golf courses in Wisconsin Dells — Trappers Turn and the new Wild Rock at the Wilderness. Over two hundred and fifty golfers on 52 teams (up from 42 teams in 2007) took part in the outing, which raised nearly \$225,000 for Easter Seals Camp Wawbeek and the Wisconsin Elks/Easter Seals Respite Camp.



Legendary Wisconsin Badgers running back Billy Marek mingled with campers at Camp Wawbeek after the outing.

“The Golf Outing for Kids is truly one of a kind,” says Terri Spring, who coordinates the event. “Most of our celebrities and sponsors golf in a number of outings each year. But the opportunity for everyone to meet the kids who will benefit from the money raised makes the Easter Seals Golf Outing for Kids unique. It's *the* outing that everyone looks forward to being a part of year after year.”



University of Wisconsin Women's Basketball Coach Lisa Stone considers her next shot at Wild Rock.



Former New York Yankee pitcher Ryne Duren (second from left) golfed with the team from the Bank of Wisconsin Dells, which serves as the Event Sponsor.

After enjoying a great round of golf, golfers and team captains — made up of active or retired sports celebrities — headed to Camp Wawbeek for a BBQ and an event program during which supporters were thanked and awards were given out. A highlight of this year's program was the live auction conducted by Kalahari owner Todd Nelson that saw spirited bidding from the crowd.

Golfers and celebrity team captains also had time to tour Camp Wawbeek and visit with campers, seeing and hearing firsthand how the money they raise is used and how it continues to impact the lives of Wawbeek and Respite campers.



Brenda Thompson Regional Development Director - Northwestern Wisconsin

Joining the Easter Seals staff in 1998, Brenda Thompson serves part-time as the Regional Development Director for Northwestern Wisconsin.

From her home in Eau Claire, Brenda works with the VIPs on the northern

Wisconsin Annual Campaign and coordinates two major fundraisers, the Eau Claire Fall Fun Fest and the Wausau Dance and Raffle. She also works with Century 21 Dairyland Realty North in Medford on two smaller events.

Brenda graduated from the University of Wisconsin - Eau Claire in Business Administration-Marketing. She lives with her husband David, their two sons, Dakota and Tanner, and a variety of animals. She enjoys running, walking, gardening and reading.



Nanc Howard Executive Assistant

Upon graduating from MATC in 1968, Nanc Howard accepted a job with Easter Seals and has been with the agency ever since.

Nanc has seen enormous changes over the years, but says that one thing remains the same. “Easter Seals continues to provide unique and life-changing services to children and adults and I'm so proud to be a part of an organization that does what we do. Even though I don't work directly with clients, I see what our services mean to them and to their families.”

Nanc is Executive Assistant to Christine Fessler, Easter Seals CEO and as such, works with the Board of Directors. She also works part time in the Development Department where she contributes significantly to the smooth running of the Golf Outing for Kids and assists Brenda Thompson, Regional Development Director for Northwest Wisconsin, with the northern Wisconsin Annual Campaign and several special events in Brenda's region of the state. Because she also acts as the office manager in the Madison office, she often finds herself to be the “go to” person when questions arise.

Nanc lives with her sister and their three cats. She enjoys cats and horses, time spent outdoors gardening and bicycling and also loves cooking and crafting.

Congratulations, Nanc, on your 40 years of dedicated service to Easter Seals!



Mary Statz Assistant for Marketing & Development

When she began job hunting in 1994 after enjoying the opportunity to stay home with her children for more than 20 years, Mary Statz knew she wanted a job that would benefit society in some way. Easter

Seals provided what she was looking for.

“Easter Seals really makes a big difference in the lives of people around the state, and that's important to me,” Mary says. “Chris Fessler and Nance Roepke (Easter Seals CEO and Executive Vice President respectively) have also been great about tweaking my job and adjusting my responsibilities over the years to best suit my strengths. The variety and the new challenges keep my job interesting.”

Currently working as the Assistant for Marketing and Development, Mary helps with major fundraisers such as the Golf Outing for Kids and works closely with VIPs during the southern Wisconsin Annual Campaign. She coordinates the statewide direct mail program, acts as the liaison with Easter Seals ambassadors, designs various marketing materials and writes and edits the Network News. In 2006, Mary revitalized Easter Seals' dated Hop-N-Ing program by conceptualizing, researching and writing *Avenues to Understanding*, a disability awareness curriculum aimed at children and teens. “Reworking and adding to the Hop-N-Ing program is something I've wanted to do for years,” she says. “And I'm grateful that the Board of Directors was very supportive of the idea.”

A widow with four grown children and three grandchildren, Mary also does some seasonal part-time work as a wedding florist. She enjoys reading, writing, art, gymnastics, Packer & Badger football, is teaching herself Photoshop and is never bored.

Meet the Development Team!

The Development Department is responsible for raising the funds that make it possible for Easter Seals to offer programs and services to children and adults with disabilities in Wisconsin.

Just as our programs grow and change to meet the needs of the populations we serve, fundraising methods also evolve over time. For Easter Seals, this meant a change from reliance in the mid-1980's on telethons and mail to a relationship-based approach today that includes an annual campaign, the Donation Center, a major program-based special event, the Friends of Easter Seals, a disability awareness program, two strong corporate-based fundraisers and some smaller special events along with the traditional direct mail.

For members of the Development Department, the changing face of fundraising requires adaptability and the ability to work together as a team to ensure that events and campaigns run smoothly and are successful.



Nance Roepke Executive Vice President

Before coming to Easter Seals, Nance Roepke worked in social services and as a community organizer. She was hired in January of 1985 to do local fundraising and volunteer development in the Fox Valley.

In November of that year, when

her supervisor took a job with Easter Seals National, Nance was promoted to Director of Development for the state and transferred to Madison. In 1993 she was promoted to Executive Vice President where she continued to supervise fund raising for the state as well as assisting the CEO. When Easter Seals entered into a partnership with Savers Thrift Stores in 1995 to develop a collection service, Nance took over responsibility for this effort as well.

"When I started here," Nance says, "I never expected that I would stay for over 25 years. But, Easter Seals and its services for children and adults with disabilities quickly stole my heart. It is a wonderful place to work and, since I enjoy variety and new challenges, has been a great fit for me."

"It feels so satisfying to come to work every day knowing that I am helping to provide the funding base that allows Easter Seals to provide meaningful, quality services for people with disabilities. Even more rewarding is doing so with a group of caring co-workers and volunteers."

Nance has a dynamic 91 year old mother, two beautiful daughters, six energetic grandchildren and two cats. When not working or enjoying time with family, she likes gardening, reading, photography and travel.

"It's a great life," she adds. "I am very blessed!"



Terri Spring Regional Development Director - Southern Wisconsin

A lifetime of experiences led Terri Spring to her current position as Regional Development Director for Easter Seals Wisconsin.

In 2002, after working for many years as a community activist and political fundraiser, Terri decided she was ready to shift the focus of her work, provided she could still work in a job that would impact people's lives in a positive way. "Easter Seals fit the bill for me," she says.

During her six years with Easter Seals, Terri has set-up televised auctions in Green Bay and Madison, worked on snowmobile events all over Dane County, sold Easter Seals ornaments, raffled cars, coordinated the Annual Campaign in southern Wisconsin, planned wine tasting events and organized the annual Golf Outing for Kids.

She enjoys the wide variety of projects and quality of the staff and volunteers with whom she works.

Terri's top priority remains her family which includes her husband, Greg, and three interesting sons. The eldest is an actor/director/playwright, the middle son attends Northwestern University but has spent the past year studying and working in China and the youngest is attending UW-Madison and has a special interest in esoteric foreign rap music. In her spare time she likes to read, spend time with her family and travel to the far reaches of the globe.



Carlyle Greendeer accepted Ho-Chunk Hotel & Casino's Diamond Sponsor Award and paused to pose with a group of Camp Wawbeek campers.



Jack Waterman, whose enthusiastic support of Easter Seals contributes greatly to the success of the Golf Outing for Kids, looks on as campers salute him and his wife, Mary, in song.



Golf Outing for Kids event hosts Pat Richter and Barry Richter.



Mike Eaves (center), the University of Wisconsin Men's Hockey Coach, golfed with the team from Continuum Investment LP.

Easter Seals thanks these major Golf Outing for Kids sponsors:

**Bank of Wisconsin Dells
Ho-Chunk Casino**

ADCI
American Family Insurance
AnchorBank
Associated Bank
Associated Wealth Management
Buffalo Phil's Grille
C & H, Inc. of Reedsburg
Continuum Investment, LP
David & Nancy Walsh Family Fdn.
Dells.com/WisTravel.com
Fish & Schulkamp, Inc.

General Engineering, Inc.
Great Wisconsin Credit Union
Great Wolf Lodge
Gregory C. Van Wie Foundation
Holiday Wholesale
Holley Development
Kalahari Resorts
Knuckleheads
Kraemer Brothers
Krantz Electric
Lathrop & Clark, LLP
Lycon, Inc.
Meridian Laboratory

Mermaid Car Wash
Missoula Mac McDonald's
Monk's
Moosejaw Pizza & Dells Brewing Co.
Morgan Stanley
Mortenson, Matzelle & Meldrum
Mt. Olympus Water & Theme Park
Noah's Ark
Original Wisconsin Ducks
S & L Hospitality
Southern Italy Wine Distributors
Stevens Construction

Stifel, Nicolaus & Company, Inc.
Suby Von Haden & Associates
SYSCO Foods-Baraboo
Tanger Outlets
Tommy Bartlett Show
Toshiba
Trappers Turn Golf Club
UW Virtual Colonoscopy Screening
Water Technology
Jack & Mary Waterman
Wilderness Hotel
Wild Rock Golf Club

Special thanks to: Large Format Digital

2008 Easter Seals Annual Recognition Dinner Honorees

Outstanding Volunteer Service



Jim Zell

Impressed by the services he received from the FARM Program in 1999, Jim Zell has long shared information about the program with neighbors. Affectionately called “the Pied Piper of central Wisconsin” by the Easter Seals FARM staff, Jim has persuaded more than 25 farmers to contact Easter Seals for information and advice on dealing with a disability in a farm setting.

Jim has hosted a number of FARM-related local and national events at his Mosinee dairy operation and has also taken an active role in raising funds for Easter Seals Wisconsin.

Farmers trust farmers, and having someone like Jim, a respected member of the agricultural community, promoting the Easter Seals FARM Program has done more for our credibility in central Wisconsin than any amount of marketing could ever have achieved.

Outstanding Civic Leadership



Dave Obey

Representative David Obey has been a champion of issues affecting people with disabilities throughout his legislative career. In his role as Chariman of the House Appropriations Committee, he has fought to assure funding for all human service programs in the federal appropriations process. He has also been a primary champion for rural residents with disabilities through his support for the AgrAbility program both nationally and in Wisconsin.

Outstanding Partner



**Dells Boat Company
Mike Baumgartner**

This year, Camp Wawbeek is celebrating its 70th year of providing camping experiences to children and adults with disabilities. And for every one of those years, the Dells Boat Company, Wisconsin Dell’s signature attraction which played a huge part in making the Dells what it is today, has been part of the Camp Wawbeek experience. Every Friday morning throughout the summer campers and staff are treated, without charge, to a boat tour of the beautiful scenery along the river that gives Wisconsin Dells its name.

The pilot and tour guides have formed relationships with campers, remembering names and personalities and establishing in-jokes and unique boat trip traditions. Their commitment to making sure everyone has fun is a contributing factor in many campers listing the boat trips as their very favorite part of camp.

Recognition of Personal Growth



Thomas Foellmi

Thomas Foellmi has been a member of the Camp Wawbeek family since he first attended camp at age 9. For seven summers Thom achieved things he hadn’t thought possible, made close friends and “gave back” to Easter Seals by acting as a camp ambassador. When he was 16, he decided to leave the camper life behind and became a volunteer, helping other campers push their limits. It was a wonderful match and by the time he was heading off to college he was working as a counselor. His knowledge of what it takes to create a fun but safe environment helped him progress to Unit Leader and then to Head Counselor of the male dorm.

Thom will be graduating from UW-LaCrosse in December as a History major, with aspirations of joining the Peace Corps. He plans to eventually attend graduate school in Political Science before deciding where life will take him.

Outstanding Fundraiser



Bob Weber

Since he began raising funds for Easter Seals Wisconsin as a VIP in our Annual Campaign 20 years ago, Bob Weber has demonstrated his dedication to the organization not only as a fundraiser, but by taking the time to tell relatives, co-workers and business associates about the good work being done by Easter Seals and encouraging them to become further involved in supporting the organization.

In the last two years, Bob has worked with First Weber Foundation to encourage *their* support of Easter Seals and has creatively planned for the future by forming a team of First Weber agents that will ensure the company’s continued involvement with Easter Seals after his retirement.

In every way possible, Bob has demonstrated his commitment to Easter Seals, our mission and the people we serve.

Outstanding Philanthropy



Mary Krall

Mary Krall grew up in Wisconsin Dells and has been aware of Camp Wawbeek for as long as she can remember. After making a generous gift through Easter Seals’ direct mail program, Mary and her late husband, Michael, were invited to visit Camp Wawbeek for a cookout following the Golf Outing for Kids. There, they were able to witness firsthand how their generosity was being put to use. They were moved by what they saw and became major contributors to the campaign to build the Van Wie Residence Hall and later, the new Respite building.

Mary’s heart is deeply connected to our cause. Because of that, she has made a profound difference in the lives of many people. On a wall in the Respite building, a small plaque recognizes Mary’s incredible generosity with the simple words, “Our Special Angel, Mary Krall.”

Lifetime Service Award



**Wisconsin-Upper Michigan Kiwanis
(left to right) Wilbur Sundt, Easter Seals Wisconsin Board Chairman Paul Karch, Richard Mortimer and Jane Spencer
(representing her father, Alan Anderson)**

While the Kiwanis built the pool at Camp Wawbeek in 1957, it wasn’t until 1979 that the Kiwanis Governors took it upon themselves to make support for Camp Wawbeek an annual goal of the organization. Al Anderson, Wil Sundt and Dick Mortimer – all former Governors of the Kiwanis – were instrumental in making this happen.

In 1979 when it became apparent that, without major repairs and updates, the swimming pool at Camp Wawbeek would have to be closed, Al Anderson took on the fundraising for the needed improvements as his Governor’s Project, raising over \$17,000 — more than enough to make the repairs.

In the early 1980’s Wil Sundt made it his goal to have individual clubs send campership support to Easter Seals Wisconsin.

Dick Mortimer continued the campership drive and decided to also ask clubs to give, if they wished, directly to Wawbeek for his Governor’s Project. Through his efforts nearly \$8,000 was raised to replace the fence around the pool.

Since then, each sitting Kiwanis Governor has worked each year with camp staff to determine a need at Camp Wawbeek and to provide it. Their combined efforts have raised nearly one million dollars for Camp Wawbeek!